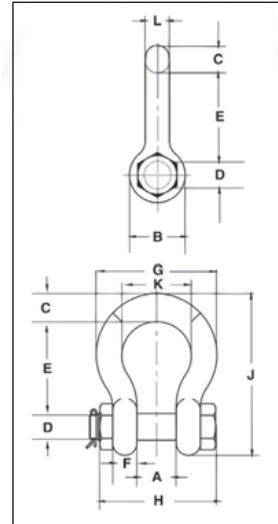




**G-2140 / S-2140**

G-2140 meets the performance requirements of Federal Specification RR-C-271F, Type IVA, Grade B, Class 3, except for those provisions required of the contractor. For additional information, see page 452.

- Quenched and Tempered.
- Alloy bows, Alloy bolts.
- Forged Alloy Steel 2 thru 200 metric tons. Cast Alloy Steel 250 thru 400 metric tons. Meets performance requirements of Grade 8 shackles.
- Working Load Limit is permanently shown on every shackle.
- 30, 40, 55, and 85 metric ton shackle bows are available galvanized or self colored with pins that are galvanized and painted red.
- 120, 150, 175 metric ton shackle bows are hot-dip galvanized; bolts are Dimetcoated® and painted red.
- 400 metric ton shackle bows are Dimetcoated®; bolts are Dimetcoated® and painted red.
- Sizes 1-1/2 and larger are **RFID EQUIPPED**.
- Approved for use at -40 degrees C (-40 degrees F) to 204 degrees C (400 degrees F).
- Shackles are Quenched and Tempered and can meet DNV impact requirements of 42 joules (31 ft-lbs.) at -20 degrees C (-4 degrees F).
- All sizes are individually proof tested if requested at time of order, to 2.0 times the Working Load Limit.
- Refer to page 88 for Crosby COLD TUFF® shackles that meet the additional requirements of DNV rules for certification of lifting applications - Loose Gear.
- Shackles 200 metric tons and larger are provided as follows.
  - Serialized pin and bow
  - Material certification (chemical)
  - Magnetic particle inspected.
  - Certification must be requested at time of order.
- Meets or exceeds all requirements of ASME B30.26 including identification, ductility, design factor, proof load and temperature requirements. 2140 shackles meet other critical performance requirements including impact properties and material traceability, not addressed by ASME B30.26.
- Type Approval and certification in accordance with ABS 2006 Steel Vessel Rules 1-1-17.7, and ABS Guide for Certification of Cranes.
- Look for the Red Pin® . . . the mark of genuine Crosby quality.



**SEE APPLICATION INFORMATION**

On Page 92 of the General Catalog  
Para Español: [www.thecrosbygroup.com](http://www.thecrosbygroup.com)

## G-2140 / S-2140 Crosby® Alloy Bolt Type Anchor Shackles

Nominal Shackle Size (in.)	Working Load Limit (t)*	Stock No.		Weight Each (kg)	Dimensions (mm)											Tolerance +/-	
		G-2140	S-2140		A	B	C	D +/- .5	E	F	G	H	J	K	L	A	E
3/8	2	1021015	-	0.15	16.8	23.1	9.7	11.2	36.6	9.7	45.2	55.1	63.2	26.2	9.7	1.5	3.3
7/16	2 2/3	1021020	-	0.22	19.1	26.9	11.2	12.7	42.9	10.4	51.6	63.8	73.9	29.5	11.2	1.5	3.3
1/2	3 1/3	1021029	-	0.36	20.6	30.2	12.7	16.3	47.8	11.7	58.7	71.1	83.3	33.3	12.7	1.5	3.3
5/8	5	1021038	-	0.76	26.9	38.1	17.5	19.6	60.5	14.7	74.7	90.4	106.4	42.9	16.0	1.5	3.3
3/4	7	1021047	-	1.23	31.8	46.0	20.6	22.6	71.4	17.5	88.9	105.4	126.2	50.8	19.1	1.5	6.4
7/8	9 1/2	1021056	-	1.79	36.6	53.1	24.6	25.9	84.1	20.6	102.4	122.4	148.1	57.9	22.4	1.5	6.4
1	12 1/2	1021065	-	2.57	42.9	60.5	26.9	29.2	95.3	23.4	119.1	136.9	166.6	68.3	25.4	1.5	6.4
1 1/8	15	1021074	-	3.75	46.0	68.3	31.8	31.8	108.0	26.4	131.1	149.9	189.7	73.9	28.7	1.5	6.4
1 1/4	18	1021083	-	5.31	51.6	76.2	35.1	35.6	119.1	29.5	146.1	169.9	209.6	82.6	32.8	1.5	6.4
1 3/8	21	1021092	-	7.18	57.2	84.1	38.1	38.9	133.4	32.5	162.1	183.1	232.7	92.2	36.1	3.3	6.4
1-1/2	30	1021110	1021129	8.52	60.5	91.9	41.1	41.4	146	35.3	175	196	254	98.6	38.9	3.3	6.4
1-3/4	40	1021138	1021147	15.4	73.2	106	57.2	50.8	178	44.5	224	237	313	127	46.7	3.3	6.4
2	55	1021156	1021165	23.6	82.6	122	61.0	57.2	197	50.8	258	264	347	146	52.8	3.3	6.4
2-1/2	85	1021174	1021183	43.5	105	148	79.2	69.9	267	66.5	324	345	455	184	68.8	6.4	6.4
3	120	1021192	-	81	127	165	92.2	82.6	330	76.2	371	384	546	200	79.2	6.4	6.4
3-1/2	† 150	1021218	-	120	133	203	111	95.3	372	95.3	432	448	632	229	91.9	6.4	6.4
4	† 200	1021236	-	153	140	229	116	108	368	102	457	517	652	254	102	6.4	6.4
4 3/4	† 200	1021234	-	209	184	267	127	121	386	116	529	611	706	279	121	6.35	6.35
5	† 250	1021443	-	276	216	305	143	127	470	123	600	632	828	330	127	4.0	1.80
6	† 300	1021252	-	362	213	330	154	152	475	124	629	666	871	330	149	4.0	1.80
7**	† 400	1021478	-	500	210	356	184	178	572	165	660	728	1022	330	152	6.4	6.4

\* Note: Maximum Proof Load is 2.0 times the Working Load Limit. Minimum Ultimate Load is 4.5 times the Working Load Limit on 2 thru 21 metric tons. For sizes 30 thru 175 metric tons, Minimum Ultimate Load is 5.4 times the Working Load Limit for 200 thru 400 metric tons, Minimum Ultimate Load is 4 times the Working Load Limit. \*\* Cast Alloy Steel.  
† Furnished with Round Head Bolts with an eyebolt for handling. For Working Load Limit reduction due to side loading applications, see page 94.