

Crosby® Lifting Clamps



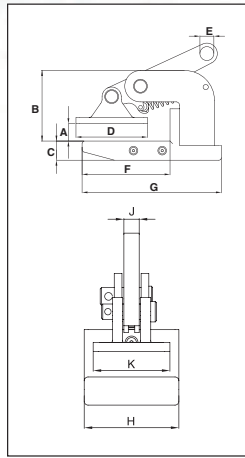
CROSBY[®] LIFTING CLAMPS

Horizontal Clamps



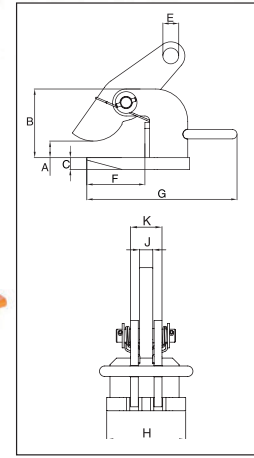
IPHNM10

The IPHNM10 horizontal lifting clamps have a pretension feature that allows the user to attach the clamps to the material for horizontal lifting and transfer of non-sagging material. To be used where material surface must not be damaged. These clamps must be used in pairs or more.



IPH10

The IPH10 horizontal lifting clamps with spring loaded tension have a pretension feature that allows the user to attach the clamps to the material for horizontal lifting and transfer of non-sagging material. These clamps must be used in pairs or more.



For Horizontal Lift and Transfer with Pretension System

- Available in capacities of .5 thru 12 metric tons.
- Jaw openings available: 0 to 120mm.
- Welded alloy steel body for strength and smaller size. Forged alloy components, where required.
- Individually Proof Tested to 2 times the Working Load Limit with certification.
- Company name (Crosby/IP), logo, Working Load Limit and jaw opening permanently stamped on body.
- Each product is individually serialized, with the serial number and Proof Load test date stamped on body. User manual with test certificate is included with each clamp.
- Maintenance replacement parts are available.
- Manufactured by a ISO 9001 facility.
- All sizes are **RFID EQUIPPED**.



Load Rated

Model IPHNM10

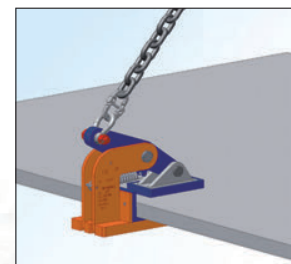
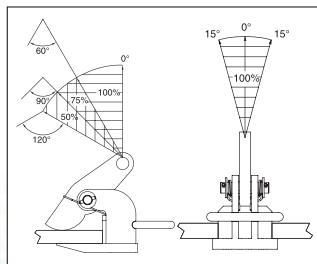
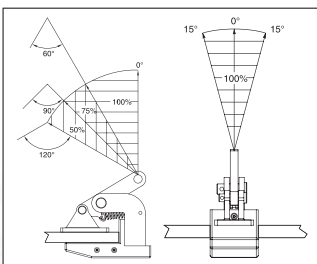
Model	Working Load Limit (Per Pair) (t)*	IPHNM10 Stock No.	Weight Each (kg)	Dimensions (mm)									
				Jaw A	B	C	D	E	F	G	H	J	K
IPHNM10	.5	2703287	2.0	0 - 20	81	22	82	16	101	160	74	12	60
IPHNM10	1	2703288	3.5	0 - 35	93	30	92	16	103	164	74	12	60
IPHNM10	2	2703290	7.5	0 - 30	139	30	131	22	166	245	100	20	74
IPHNM10/J	2	2703291	8.0	30 - 60	169	30	131	22	166	245	100	20	74

* Design Factor based on EN 13155 and ASME B30.20.

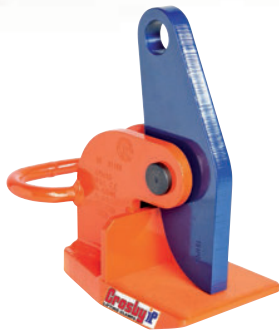
Model IPH10 and IPH10/J: With Spring Loaded Tension, Magnets and Handle

Model	Working Load Limit (Per Pair) (t)*	IPH10 Stock No.	Weight Each (kg)	Dimensions (mm)									
				Jaw A	B	C	E	F	G	H	J	K	
IPH10	.5+	2703297	1.8	0 - 20	86	12	16	103	150	60	12	27	
IPH10	1+	2703298	2.5	0 - 35	100	16	16	103	150	60	12	31	
IPH10	2	2703522	5.5	0 - 60	117	16	22	109	256	110	20	40	
IPH10	3	2703523	7.5	0 - 60	117	20	26	109	266	120	20	48	
IPH10	4.5	2703524	10.5	0 - 60	132	25	30	104	280	130	20	48	
IPH10	6	2703525	13.0	0 - 60	143	25	36	123	320	130	20	48	
IPH10	9	2703526	18.5	0 - 60	157	30	43	133	330	140	25	62	
IPH10	12	2703527	21.5	0 - 60	172	30	47	141	353	150	25	62	
With larger jaw opening #													
IPH10/J	3	2703533	9.0	60 - 120	177	20	26	109	266	120	20	48	
IPH10/J	4.5	2703534	12.0	60 - 120	192	25	30	104	280	130	20	48	
IPH10/J	6	2703535	15.0	60 - 120	203	25	36	123	320	130	20	48	
IPH10/J	9	2703536	20.5	60 - 120	217	30	43	133	330	140	25	62	
IPH10/J	12	2703537	24.0	60 - 120	232	30	47	141	353	150	25	62	

* Design Factor based on EN 13155 and ASME B30.20. + No handle or magnets. # Larger Working Load Limits available.



Horizontal Clamps

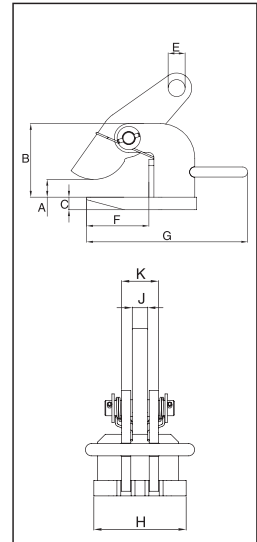


IPH10E

The IPH10E / IPH10JE horizontal lifting clamps are for use in the lifting and transfer in horizontal position of non-sagging materials or of bundles of non-sagging material. These clamps must be used in pairs or more.

For Horizontal Lifting and Transfer

- Available in capacities of .75 thru 25 metric tons.
- Wide variety of jaw openings available: 0 to 120mm.
- Welded alloy steel body for strength and smaller size. Forged alloy, components where required.
- Equipped with handle for easy placement.
- Individually Proof Tested to 2 times the Working Load Limit with certification.
- Company name (CrosbyIP), logo, Working Load Limit and jaw opening permanently stamped on body.
- Each product is individually serialized, with the serial number and Proof Load test date stamped on body. User manual with test certificate is included with each clamp.
- Maintenance replacement parts are available.
- Manufactured by an ISO 9001 facility.
- All sizes are **RFID EQUIPPED**.



Model IPH10E: Jaw opening range 0 to 60mm

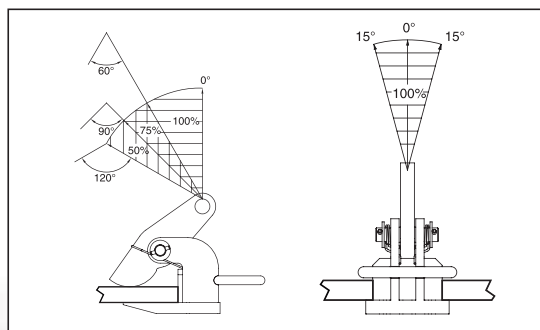
Model	Working Load Limit (Per Pair) (t)*	IPH10E Stock No.	Weight Each (kg)	Dimensions (mm)								
				Jaw A	B	C	E	F	G	H	J	K
IPH10E	2	2703542	5.50	0 - 60	117	16	22	109	256	110	20	40
IPH10E	3	2703543	7.50	0 - 60	117	20	26	109	266	120	20	48
IPH10E	4.5	2703544	10.5	0 - 60	132	25	30	104	280	130	20	48
IPH10E	6	2703545	13.0	0 - 60	143	25	36	123	320	130	20	48
IPH10E	9	2703546	18.5	0 - 60	157	30	43	133	330	140	25	62
IPH10E	12	2703547	21.5	0 - 60	172	30	47	141	353	150	25	62
**IPH10Z	25	2705119	39.0	0 - 60	169	40	47	164	300	220	32	88

* Design Factor based on EN 13155 and ASME B30.20. **Without handle.

Model IPH10JE: Jaw opening range 60 to 120mm

Model	Working Load Limit (Per Pair) (t)*	IPH10JE Stock No.	Weight Each (kg)	Dimensions (mm)									
				Jaw A	B	C	E	F	G	H	J	K	L
IPH10JE	3	2703553	9.00	60-120	177	20	26	109	266	120	20	48	11
IPH10JE	4.5	2703554	12.0	60-120	192	25	30	104	280	130	20	48	12
IPH10JE	6	2703555	15.0	60-120	203	25	36	123	320	130	20	48	14
IPH10JE	9	2703556	20.5	60-120	217	30	43	133	330	140	25	62	16
IPH10JE	12	2703557	24.0	60-120	232	30	47	141	353	150	25	62	17

* Design Factor based on EN 13155 and ASME B30.20.



Horizontal Clamps

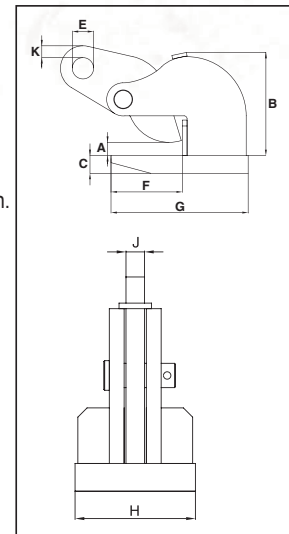


IPOHZ

The IPOHZ horizontal lifting clamp is to be used for lifting and transferring, in the horizontal position, of thin sheet and other materials that will sag or bend when lifted. These clamps must be used in pairs or more.

For Horizontal Lifting and Transfer

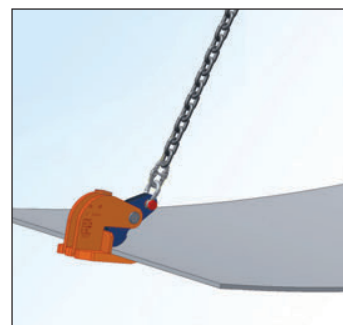
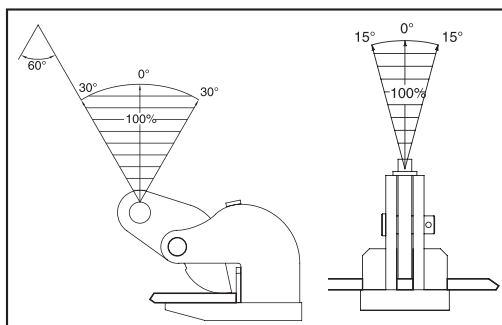
- Available in capacities of .75 thru 25 metric tons.
- Wide variety of jaw openings available: 0 to 60mm.
- Welded alloy steel body for strength and smaller size. Forged alloy components, where required.
- Equipped with handle for easy placement.
- Individually Proof Tested to 2 times the Working Load Limit with certification.
- Company name (CrosbyIP), logo, Working Load Limit and jaw opening permanently stamped on body.
- Each product is individually serialized, with the serial number and Proof Load test date stamped on body. User manual with test certificate is included with each clamp.
- Maintenance replacement parts are available.
- Manufactured by a ISO 9001 facility.
- All sizes are **RFID EQUIPPED**.



Model IPOHZ: Jaw opening range 0 to 60mm

Model	Working Load Limit (Per Pair) (t)*	IPOHZ Stock No.	Weight Each (kg)	Dimensions (mm)								
				Jaw A	B	C	E	F	G	H	J	K
IPOHZ	0.75	2705401	3.0	0 - 30	94	16	16	70	118	81	12	12
IPOHZ	1.5	2705402	5.5	0 - 45	133	16	22	125	192	100	16	12
IPOHZ	3	2705403	8.0	0 - 45	137	20	26	125	200	120	20	10
IPOHZ	4.5	2705404	8.5	0 - 45	138	25	30	126	220	120	20	10
With larger jaw opening												
IPOHZ	6	2705405	15.5	0 - 60	171	30	36	135	235	130	20	20
IPOHZ	9	2705406	20.5	0 - 60	211	30	43	166	276	160	25	20
IPOHZ	12	2705407	38.0	0 - 60	217	40	47	168	294	190	25	19
IPOHZ	15	2705408	83.8	0 - 60	8.66	1.57	1.85	7.20	12.48	9.84	.98	.87

* Design Factor based on EN 13155 and ASME B30.20.



Horizontal Clamps



IPBC

The IPBC horizontal lifting clamps have a pretension feature that allows the user to attach the clamps to the material for horizontal lifting and transfer of sagging and non-sagging material. These clamps may also be used to handle material that will be used in shears, bending and rolling machines or other fabrication equipment. May also be used for turning beams from the "H" into the "I" position.

For Horizontal Transfer - with Pretension System

- Available in capacities of 1 thru 4.5 metric tons.
- Jaw openings available: 0 to 40mm.
- Welded alloy steel body for strength and smaller size. Forged alloy components, where required.
- Individually Proof Tested to 2 times the Working Load Limit with certpermanently stamped on body.
- Each product is individually serialized, with the serial number and Proof Load test date stamped on body. User manual with test certificate is included with each clamp.
- Maintenance replacement parts are available.
- Manufactured by a ISO 9001 facility.
- All sizes are **RFID EQUIPPED**.



IPHGUZ

The IPHGZ, IPHGUZ horizontal lifting clamps have a pretension locking feature that allows the user to attach the clamps to the material for horizontal lifting and transfer of sagging and non-sagging material. These clamps may also be used to handle material that will be used in shears, bending and rolling machines or other fabrication equipment. May also be used to move and lift structural shapes such as I-Beams, H-beams etc.

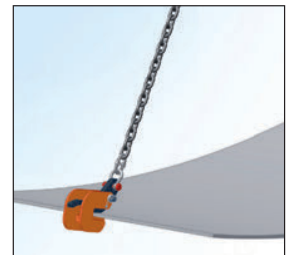
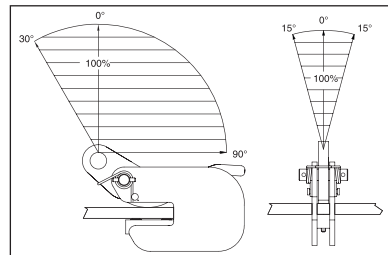
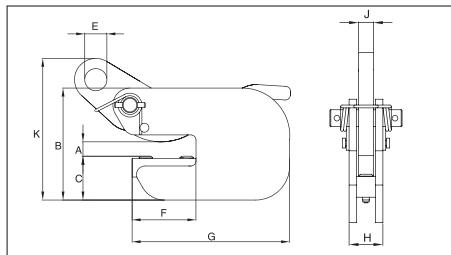


Load Rated

Model IPBC

Model	Working Load Limit (t)*	IPBC Stock No.	Weight Each (kg)	Dimensions (mm)								
				Jaw A	B	C	E	F	G	H	J	K
IPBC	1	2700410	3.5	0 - 20	132	52	26	75	185	36	16	182
IPBC	2	2700411	6.5	0 - 25	152	62	30	82	210	49	20	218
IPBC	3	2700412	8.5	0 - 25	157	66	30	82	210	57	20	225

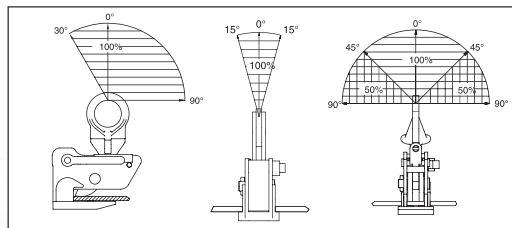
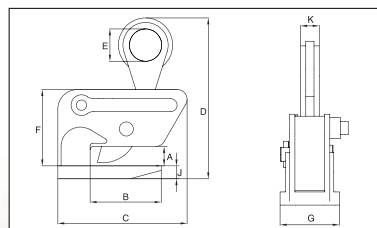
* Design Factor based on EN 13155 and ASME B30.20.



Model IPHGUZ: Universal Lifting Eye / Model IPHGZ: Fixed Hoisting Eye

Model	Working Load Limit (t)*	Stock No.	Weight Each (kg)	Dimensions (mm)								
				Jaw A	B	C	D	E	F	G	J	K
IPHGUZ	1.5	2705455	9.0	0 - 25	110	232	287	70	139	90	20	16
IPHGUZ	3.0	2705456	19.9	0 - 40	119	253	348	75	175	120	25	20
IPHGUZ	4.5	2705457	30.0	0 - 40	119	301	370	80	175	155	30	44
Fixed Hoisting Eye												
IPHGZ	.75	2705451	4.0	0 - 25	82	148	206	50	99	98	12	22
IPHGZ	1.5	2705452	7.3	0 - 25	110	200	250	50	118	90	20	28
IPHGZ	3.0	2705453	12.3	0 - 40	120	227	305	70	148	120	25	32
IPHGZ	4.5	2705454	25.0	0 - 40	120	284	381	70	181	155	30	40

* Design Factor based on EN 13155 and ASME B30.20.



Horizontal Clamps

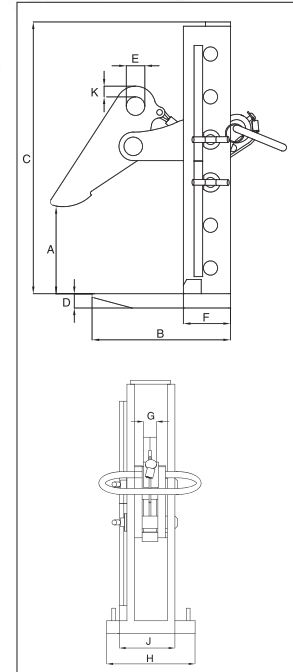


IPPE

The IPPE is suitable for lifting and transfer ring bundles of non-sagging steel plates in horizontal position. The jaw opening can be easily adjusted. Raising the handle opens the clamp. This facilitates the easy and quick placing or removing of the clamp.

For lifting and transfer ring bundles of plates

- Available in capacities of 3 thru 12 metric tons.
- Wide variety of jaw openings available: 0 to 420mm.
- Welded alloy steel body for strength and smaller size. Forged alloy components, where required.
- Individually Proof Tested to 2 times the Working Load Limit with certification.
- Company name (CrosbyIP), logo, Working Load Limit and jaw opening permanently stamped on body.
- Each product is individually serialized, with the serial number and Proof Load test date stamped on body. User manual with test certificate is included with each clamp.
- Manufactured by a ISO 9001 facility.
- All sizes are **RFID EQUIPPED**.



Model IPPE

Model	IPPE Stock No.	Working Load Limit (Per Pair) (t)*	Weight Each (kg)	Dimensions (mm)									
				Jaw A	B	C	D	E	F	G	H	J	K
3 IPPEB	2700501	3.0	10.5	0-180	194	256	20	26	66	20	140	76	15
3 IPPED	2700502	3.0	13.0	0-300	194	376	20	26	66	20	140	76	15
3 IPPEH	2700503	3.0	14.0	0-420	194	496	20	26	66	20	140	76	15
6 IPPEH	2700506	6.0	23.0	0-420	227	516	25	30	102	20	160	76	13
9 IPPEH	2700509	9.0	31.0	0-420	270	566	25	34	122	20	190	76	21
12 IPPEH	2700512	12.0	52.0	0-420	292	588	30	40	133	25	200	97	18

* Design Factor based on EN 13155 and ASME B30.20.

